

Important Notice for all Refining Customers

To better serve our customers, our **REFINING CHARGES** and **SERVICES** have changed as of June 17, 2009. See all updated information on our web site at: www.hooverandstrong.com/category/Refining/

Minimum Refining Charge	PAYABLE METAL 100% of London PM Fix
\$100	98%
100	97%
100	96%
100	95%
100	95%

- Higher Returns on Miscellaneous Scrap**
 If you send in greater than 25 ounces of miscellaneous metal scrap, you will receive a 1% greater return. For example, for 25 ounces of 14k scrap on a \$930/oz. market, you would receive \$232 more.

Minimum Refining Charge	PAYABLE METAL 100% of London PM Fix
\$100	85%
75	80%
50	75%
25	70%
\$1.25/oz.	80%
	\$0.20/oz.

- Higher Returns on Platinum, Palladium and Silver Scrap**
 If you send in greater than 100 ounces of silver, you will receive an 13% greater return. For example, for 100 ounces of silver scrap on a \$15/oz. market, you would receive \$161.25 more. If you send in greater than 10 ounces of platinum, you will receive a 6% greater return. For example, for 10 ounces of platinum scrap on a \$1,150/oz. market, you would receive \$621 more.

HOOVER REFINING CHARGES

Hoover Bank: 2 business day settlement. Metal market rates are set on the second business day following receipt.
 Hoover Standard: 2-30 business day settlement. Metal market rates are set on the day of receipt. (Subject to standard business hours.)

Hoover & Strong will accept mixed material, however, separating charges may be assessed.
 If in a year but financial interest to always have a current and accurate accounting of your materials.
 A modest base charge may occur on large scrap lots

GOLD, SILVER, PLATINUM, OR PALLADIUM AS THE ONLY PAYABLE METAL

Metal	Purity	Quantity	Minimum Refining Charge	RUSH		STANDARD	
				PAYABLE METAL 100% of London PM Fix	Minimum Refining Charge	PAYABLE METAL 100% of London PM Fix	Minimum Refining Charge
Gold	≥ 21k	≥ 25 oz.	\$250	97%	\$100	95%	
		10 - 24.99 oz.	100	96%	100	94%	
	14k	≥ 100 oz.	100	96%	100	95%	
		10 - 99 oz.	100	94%	100	93%	
Copper	≥ 100 lbs.	100	95%	100	95%		
	10 - 99 lbs.	100	93%	100	92%		

SILVER

Metal	Purity	Quantity	Minimum Refining Charge	RUSH		STANDARD	
				PAYABLE METAL 100% of London PM Fix	Minimum Refining Charge	PAYABLE METAL 100% of London PM Fix	Minimum Refining Charge
Silver	≥ 99.9%	≥ 100 oz.	\$250	85%	\$100	80%	
		100 - 99.99 oz.	100	80%	100	75%	
	99.9%	≥ 100 oz.	100	75%	100	70%	
		10 - 99 oz.	100	70%	100	65%	
99.5%	≥ 100 oz.	100	70%	100	65%		
	10 - 99 oz.	100	65%	100	60%		

PLATINUM

Metal	Purity	Quantity	Minimum Refining Charge	RUSH		STANDARD	
				PAYABLE METAL 100% of London PM Fix	Minimum Refining Charge	PAYABLE METAL 100% of London PM Fix	Minimum Refining Charge
Pt950	≥ 95%	≥ 10 oz.	\$100	94%	\$100	94%	
		10 - 9.99 oz.	100	92%	100	92%	
Pt900	≥ 90%	≥ 10 oz.	75	92%	75	92%	
		10 - 9.99 oz.	75	90%	75	90%	

PALLADIUM

Metal	Purity	Quantity	Minimum Refining Charge	RUSH		STANDARD	
				PAYABLE METAL 100% of London PM Fix	Minimum Refining Charge	PAYABLE METAL 100% of London PM Fix	Minimum Refining Charge
Pd950	≥ 95%	≥ 10 oz.	\$100	94%	\$100	94%	
		10 - 9.99 oz.	100	92%	100	92%	
Pd900	≥ 90%	≥ 10 oz.	75	92%	75	92%	
		10 - 9.99 oz.	75	90%	75	90%	

SOURCE: London Kings, bench weights, grams, troy ounces, etc.
NOTE: For Silver over 100 oz. if above 99.9% silver purity, the refining charge will be \$1,000. If under 99.9% silver purity, the refining charge will be \$1,250.

SOURCE: London Kings, bench weights, grams, troy ounces, etc.
NOTE: For Silver over 100 oz. if above 99.9% silver purity, the refining charge will be \$1,000. If under 99.9% silver purity, the refining charge will be \$1,250.

SOURCE: London Kings, bench weights, grams, troy ounces, etc.
NOTE: For Silver over 100 oz. if above 99.9% silver purity, the refining charge will be \$1,000. If under 99.9% silver purity, the refining charge will be \$1,250.

EXAMPLES

Hoover Bank Example: When you ship 1 ounce of Silver, all tags and bench charges for refining, the market is set on the second business day following receipt. Your material will be processed and you will be paid the 97% of the fine gold contained, less the \$100/oz. rush fee and refining charge within 2 business days.

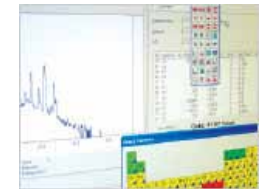
Hoover Standard Example: When you ship 1 ounce of Silver, all tags and bench charges for refining, the market is set on the day of settlement. Your material will be processed and you will be paid the 95% of the fine gold contained, less the \$100/oz. refining charge, within 30 business days.



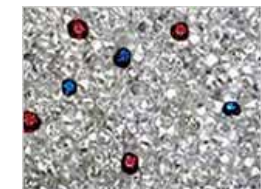
- Product Discounts**
 If you do your refining through Hoover & Strong, you'll receive a **1-1/2% cash discount** on products ordered from Hoover & Strong.



- Eco-Friendly Manufacturing**
 100% of our manufactured products are derived from HARMONY™ recycled metals.



- New Independent Analytical Services**
 These new services will help you determine the purity of your scrap without it having to be refined.



- New Diamond Melee Sorting Services**
 We do the sorting for you! This service will save you even more time when selling or re-using your stones.

Visit www.hooverandstrong.com



Please visit the Refining Section of our web site for important updates that may affect you:

www.hooverandstrong.com/category/Refining



You may also download a PDF of our updated Refining Brochure.